

Sample Information

Analyzed : 27/ 05/ 2018 12:36:55 PM

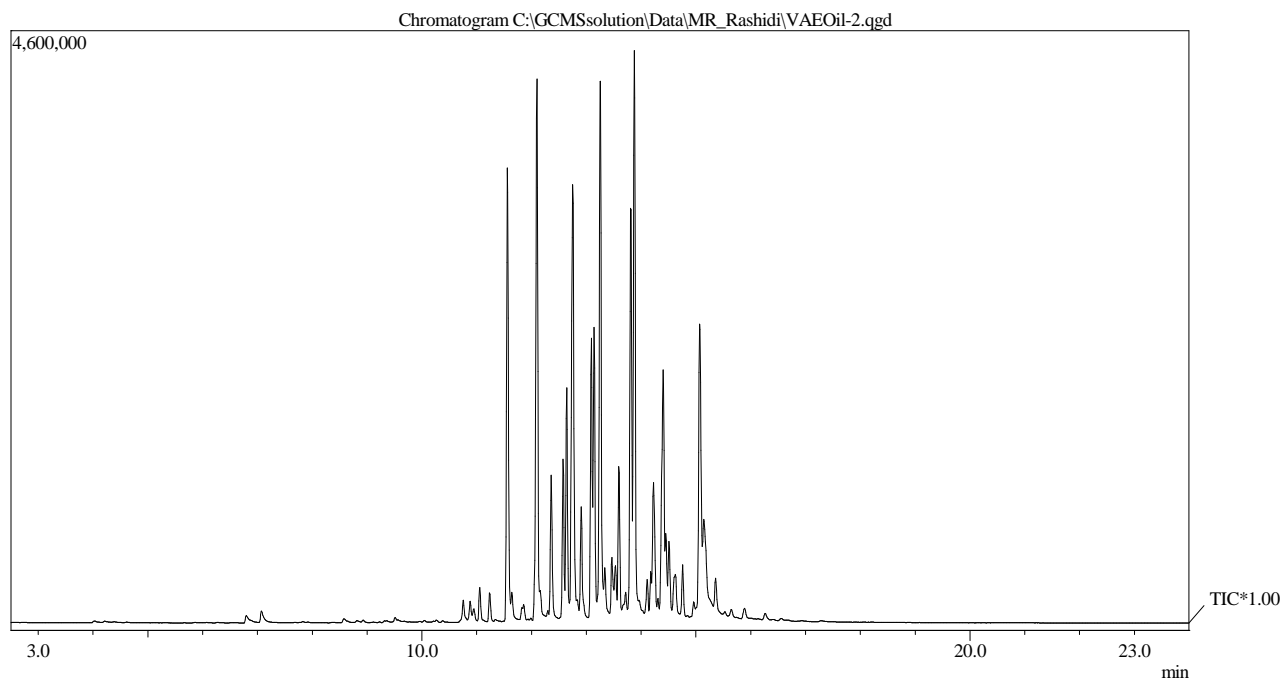
Sample Name : Mitsubishi Engine Oil Treament Sample ID : MRashidi

Inj. Volume: 0.1µl Vial No: 2

Data File : C:\GCMSsolution\Data\MR_Rashidi\VAEOil-2.qgd

Method: C:\GCMSsolution\Data\NSasper_NorazlinalizaSalim\AR-VAOil-zb5ms.qgm

Tune File: C:\GCMSsolution\System\Tune1\1905188EIF2zb5ms.qgt



[Comment]

===== Analytical Line 1 =====

[GC-2010] COLUMN: ZB-5MS 30m x 0.25mm ID x 0.25µm film thickness

Column Oven Temp. :35.0 °C
Injection Temp. :250.00 °C
Injection Mode :Split
Flow Control Mode :Linear Velocity
Pressure :23.3 kPa
Total Flow :7.2 mL/min
Column Flow :0.70 mL/min
Linear Velocity :30.1 cm/sec
Purge Flow :3.0 mL/min
Split Ratio :5.0
High Pressure Injection :OFF
Carrier Gas Saver :OFF
Splitter Hold :OFF

Oven Temp. Program	Rate	Temperature(°C)	Hold Time(min)
-		35.0	5.00
10.00		130.0	10.00

Purge Flow Program	Rate	Flow(mL/min)	Hold Time(min)
-		3.0	3.00

[Comment]

===== Analytical Line 1 =====

[GCMS-QP2010 Plus]

IonSourceTemp :220.00 °C
Interface Temp. :250.00 °C
Solvent Cut Time :2.00 min
Detector Gain Mode :Absolute
Detector Gain :0.80 kV
Threshold :100

[MS Table]

--Group 1 - Event 1--
Start Time :2.50min
End Time :24.00min
ACQ Mode :Scan
Event Time :0.50sec
Scan Speed :344
Start m/z :35.00
End m/z :200.00

Sample Inlet Unit :GC

